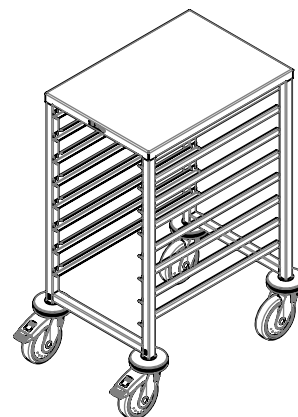
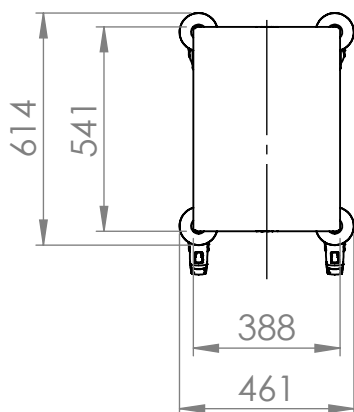
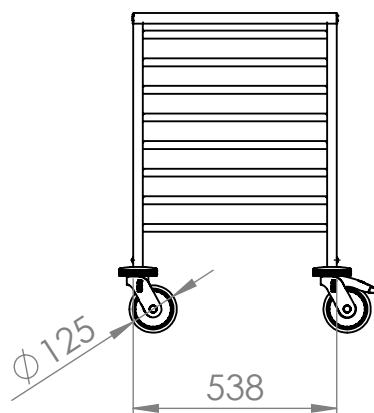
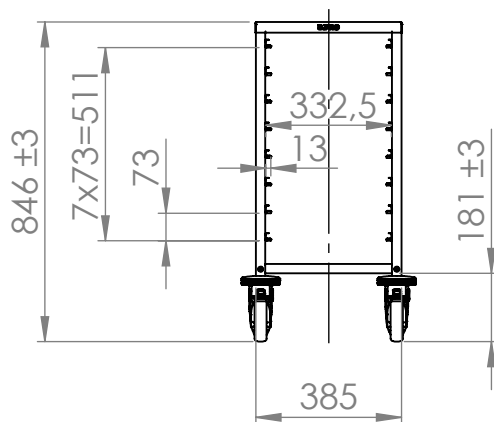



© This drawing may without our consent neither duplicated, still third persons submitted or handed over. Offences can after § 18 of the Law over mean competition criminal pursuit to involve.

Ausgedruckte Zeichnung unterliegt nicht dem Änderungsdienst!
Printed Drawing is not automatically updated!

© Diese Zeichnung darf ohne unsere Einwilligung weder vervielfältigt, noch dritten Personen vorgelegt oder ausgehändigt werden. Zuwiderhandlungen können nach § 18 des Gesetzes über unlauteren Wettbewerb strafrechtliche Verfolgung nach sich ziehen



Castors: synthetic
Capacity: 8 GN 1/1 or 16 GN 1/2
Load capacity: 100kg

| | | | | | | | | | | | |
|------------------|------------|---|--------|------------|-----|------------|-------------|---------------------------------|---------|---------------------------|------|
| 1 | 322.114.21 | | | | | | | | | | |
| Index | Rev.-No. | Description of modification | | | | | | | Date | Name | |
| <div>B.PRO</div> | | Scale | M 1:20 | Group | 100 | Status | freigegeben | Document type | KDI | Std. paper-size | A4 |
| | |  | | Material | | | | | Surface | | |
| | | Tolerances according to ISO 2768-cL | | Date | | Name | | Document item-no. 2000263830.04 | | | |
| | | | | Drawn | | 10.11.2022 | | BeiselM | | SAP material-no. 00572926 | |
| Checked | | | | 25.01.2023 | | KeselC | | | | | |
| Approved | | | | 25.01.2023 | | KeselC | | | | | |
| Origin | | Description | | | | | | | | | |
| | | RWRA 850 | | | | | | | | | |
| Notice: | | | | | | | | 2000125286 | Sheet | 1 | of 1 |